

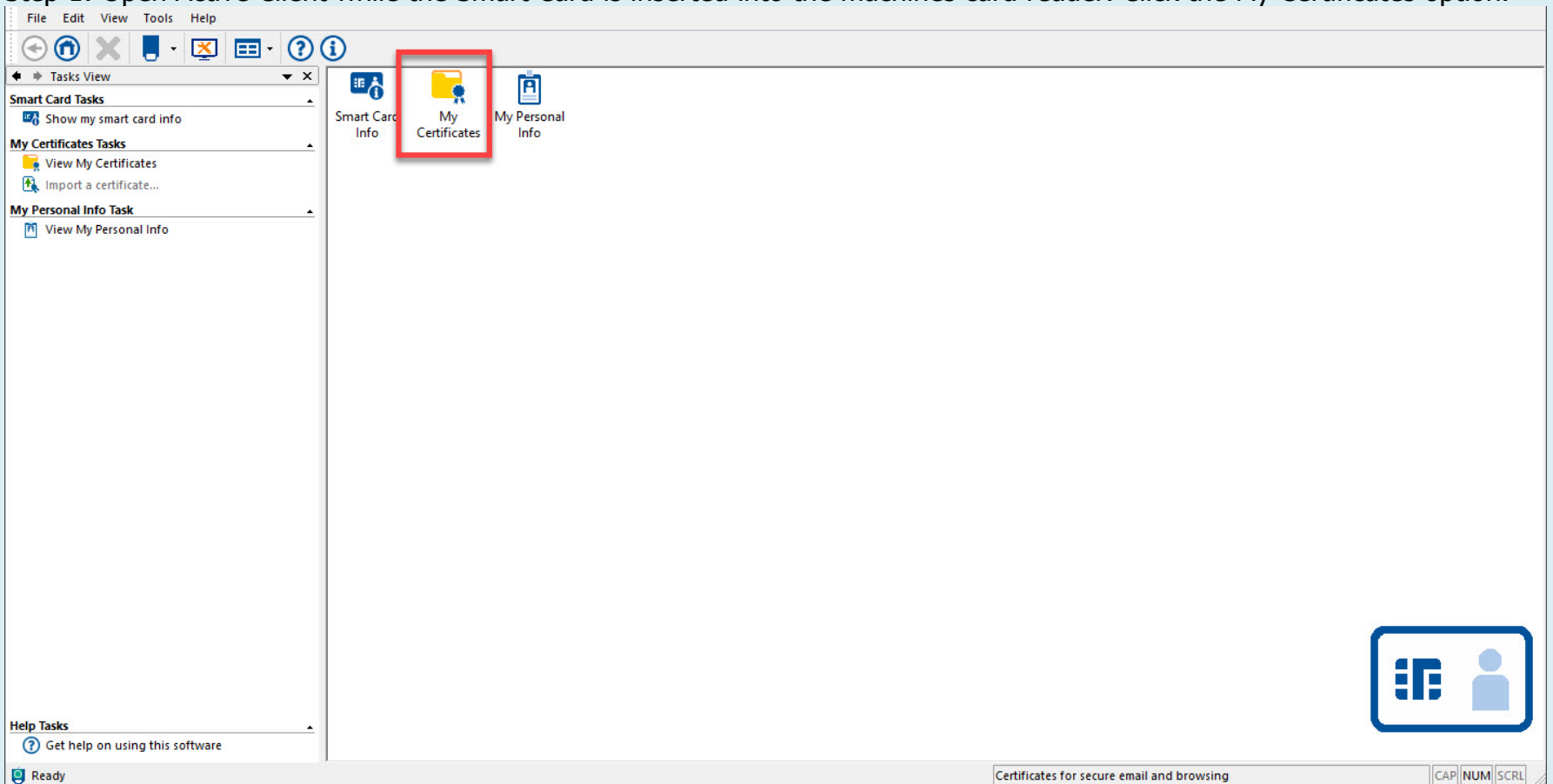
Certificate Export for Registration

Friendly Name: Authentication or ID

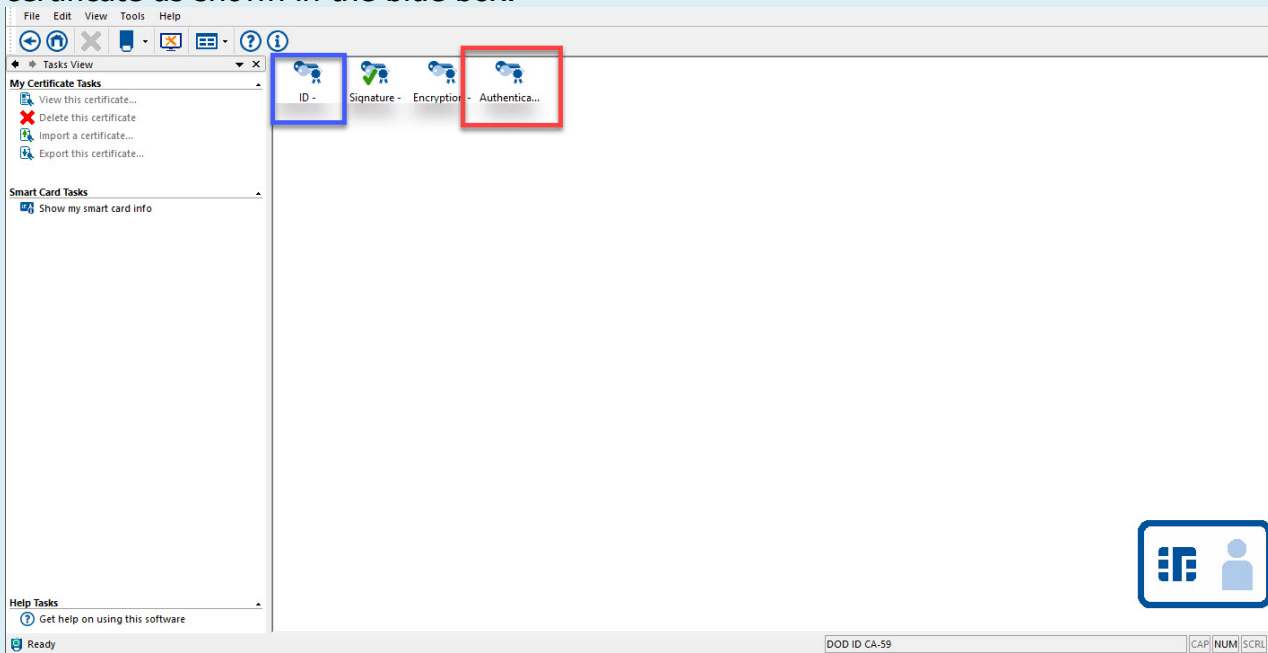
This guide will demonstrate how to export the certificate with ActiveClient, Internet Explorer, "New" Microsoft Edge, and Google Chrome. The following steps can be followed to check for the appropriate certificate for a PIEE user to export for registration. The user will check the Smart Card for the certificate with the Friendly Name equal to Authentication – USERNAME, if not present on the Smart Card then the user must use the ID – USERNAME certificate.

Step 1: Open Active Client while the Smart Card is inserted into the machines card reader. Click the My Certificates option.

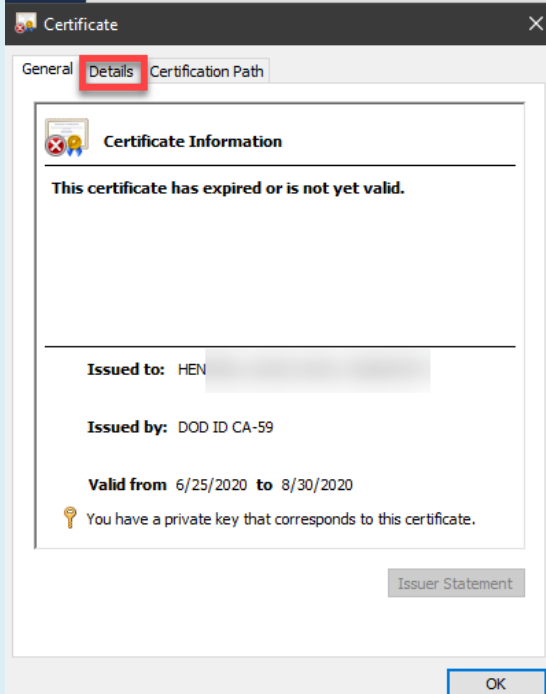
ActiveClient



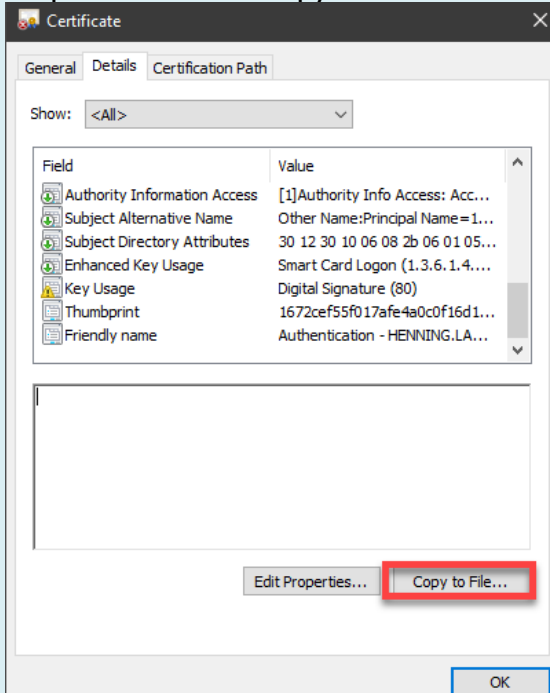
Step 2: Locate the Smart Card certificate with the Friendly Name that is Authentication – USERNAME, as seen in the red box below. If the Authentication certificate is not present on the Smart Card then the user must use the ID – USERNAME certificate as shown in the blue box.



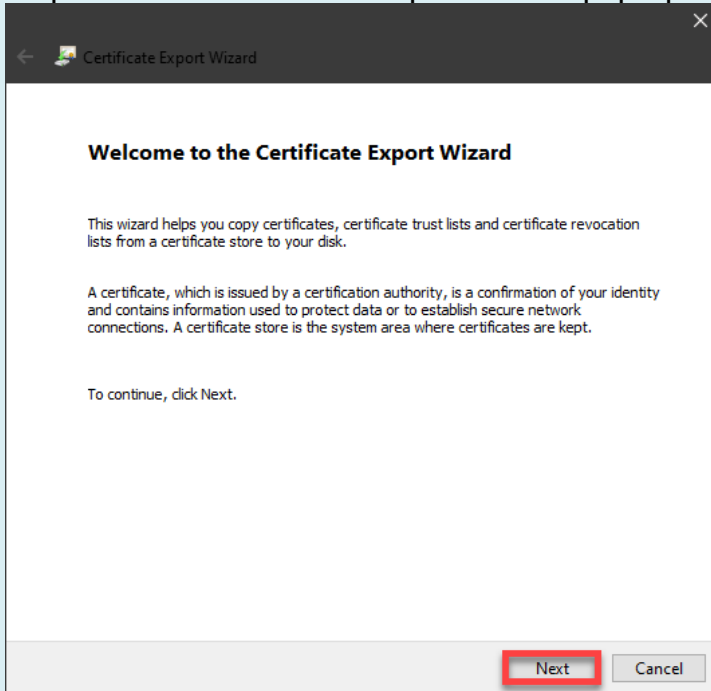
Step 3: Double click the certificate that needs exported, this will display a Certificate pop-up. Click the Details tab.



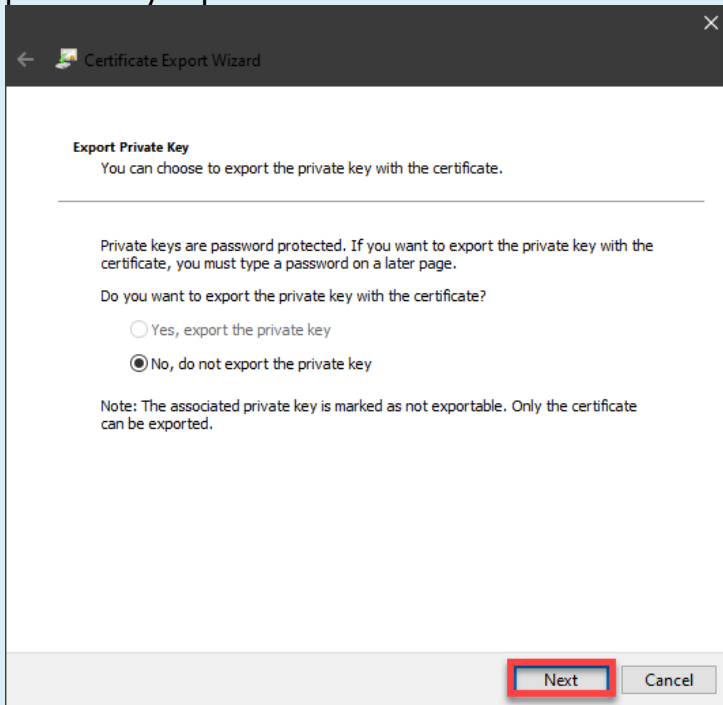
Step 4: Click the "Copy to File..." button



Step 5: On the Certificate Export Wizard pop-up click the Next button.

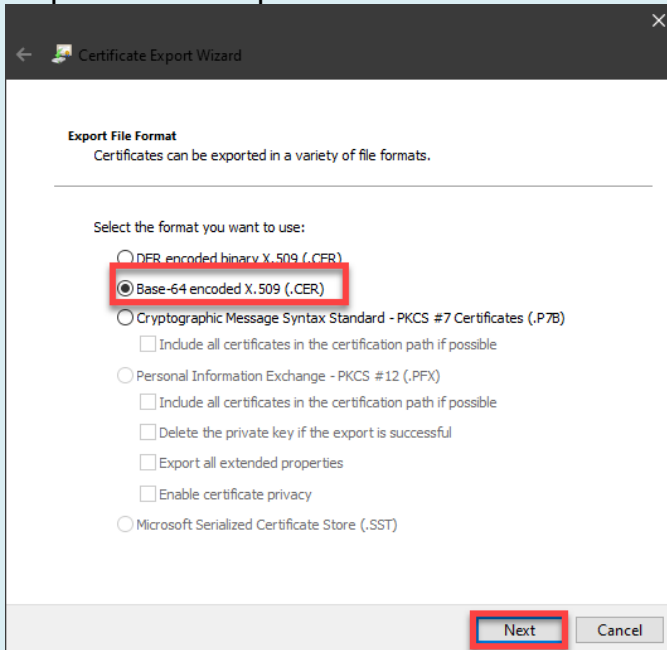


Step 6: Click the Next button again on the following Export Private Key screen. NOTE: Ensure that the “No, do not export the private key” option is selected.



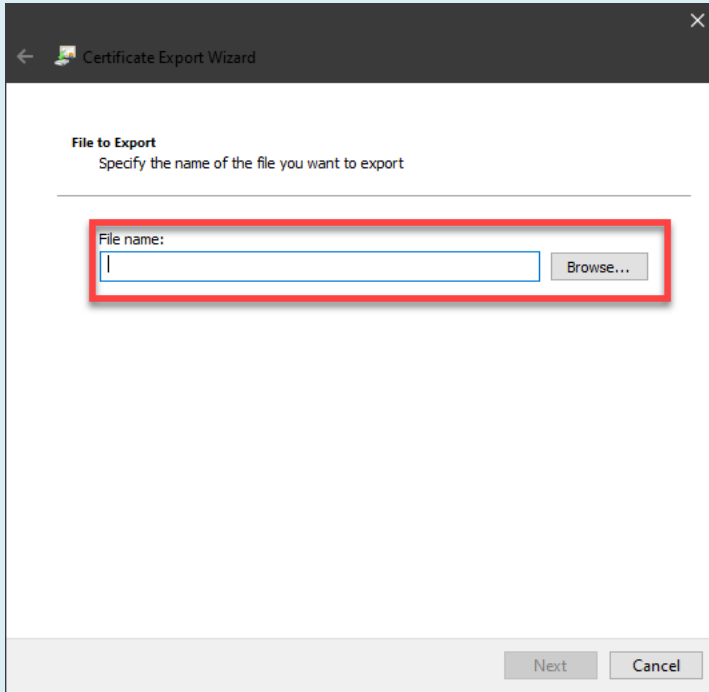
The screenshot shows the 'Export Private Key' screen of the Certificate Export Wizard. The title bar reads 'Certificate Export Wizard'. The main heading is 'Export Private Key' with the instruction 'You can choose to export the private key with the certificate.' Below this, a note states: 'Private keys are password protected. If you want to export the private key with the certificate, you must type a password on a later page.' The question 'Do you want to export the private key with the certificate?' is followed by two radio button options: 'Yes, export the private key' (unselected) and 'No, do not export the private key' (selected). A note at the bottom states: 'Note: The associated private key is marked as not exportable. Only the certificate can be exported.' At the bottom right, there are 'Next' and 'Cancel' buttons, with the 'Next' button highlighted by a red box.

Step 7: On the Export File Format screen select the “Base-64 encoded X.509 (.CER)” radial option and click the Next button.



The screenshot shows the 'Export File Format' screen of the Certificate Export Wizard. The title bar reads 'Certificate Export Wizard'. The main heading is 'Export File Format' with the instruction 'Certificates can be exported in a variety of file formats.' Below this, the instruction 'Select the format you want to use:' is followed by several radio button options: 'DER encoded binary X.509 (.CER)' (unselected), 'Base-64 encoded X.509 (.CER)' (selected and highlighted with a red box), 'Cryptographic Message Syntax Standard - PKCS #7 Certificates (.P7B)' (unselected), 'Personal Information Exchange - PKCS #12 (.PFX)' (unselected), and 'Microsoft Serialized Certificate Store (.SST)' (unselected). There are also several unchecked checkboxes: 'Include all certificates in the certification path if possible' (under PKCS #7), 'Include all certificates in the certification path if possible' (under PKCS #12), 'Delete the private key if the export is successful', 'Export all extended properties', and 'Enable certificate privacy'. At the bottom right, there are 'Next' and 'Cancel' buttons, with the 'Next' button highlighted by a red box.

Step 8: On the File Export screen click the Browse button, Windows File Explorer will open. Choose a file name and a location on the local machine.



Certificate Export Wizard

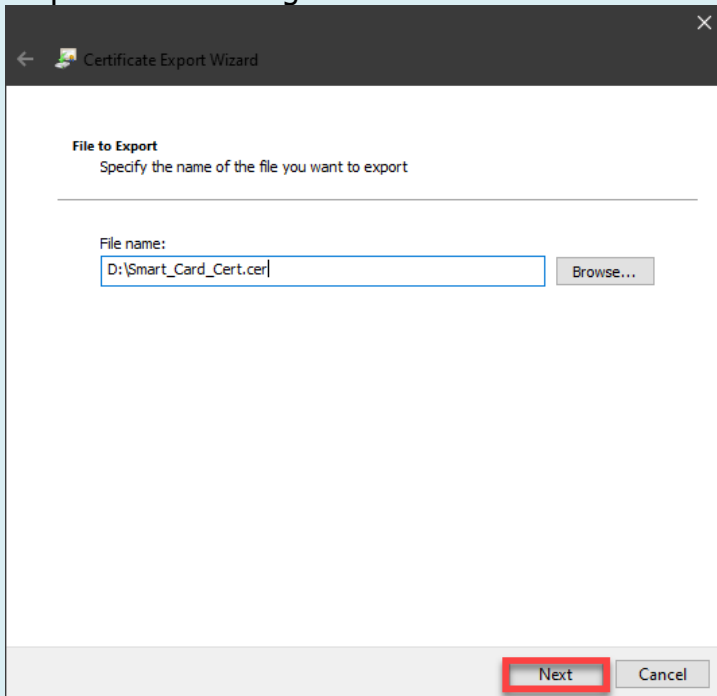
File to Export
Specify the name of the file you want to export

File name:

Browse...

Next Cancel

Step 9: After naming the file click the Next button.



Certificate Export Wizard

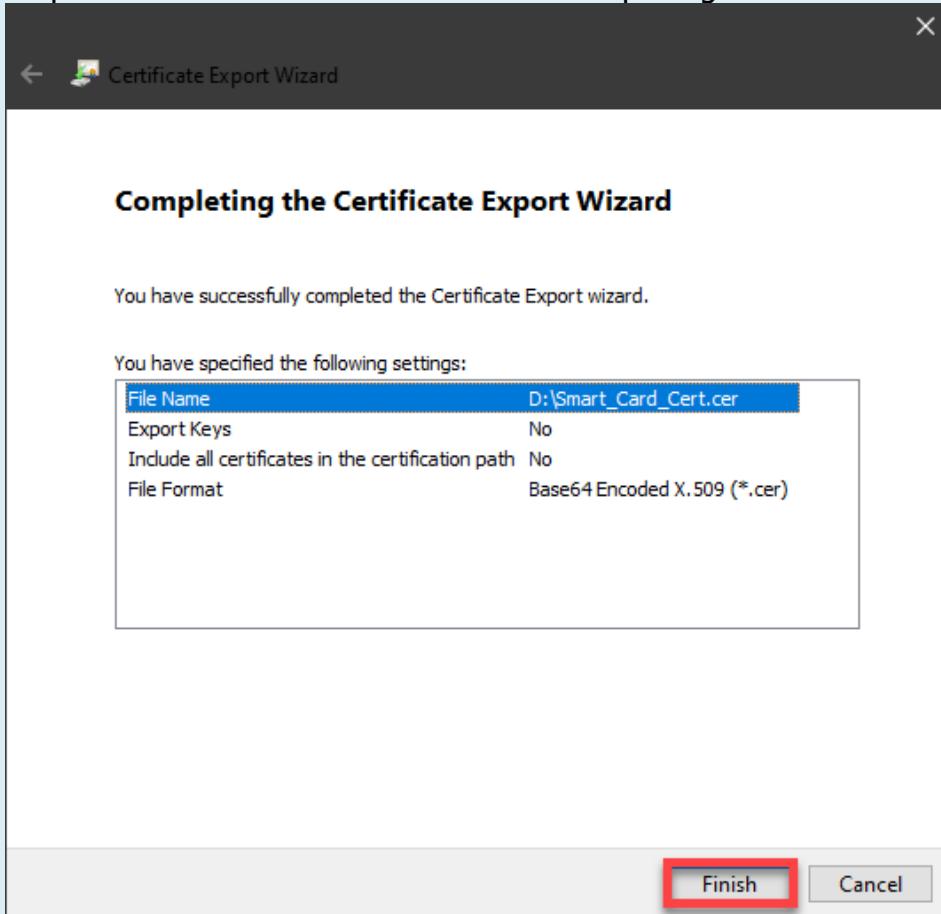
File to Export
Specify the name of the file you want to export

File name:

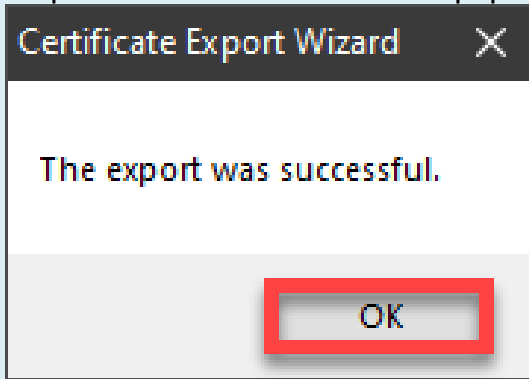
Browse...

Next Cancel

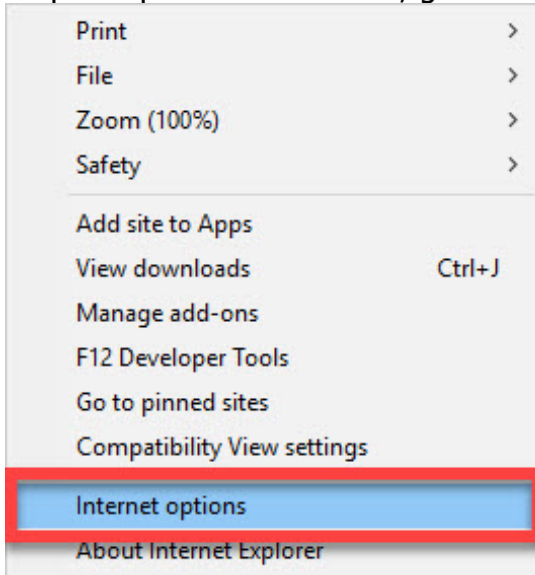
Step 10: Click the Finish button on the Completing the Certificate Export Wizard screen.



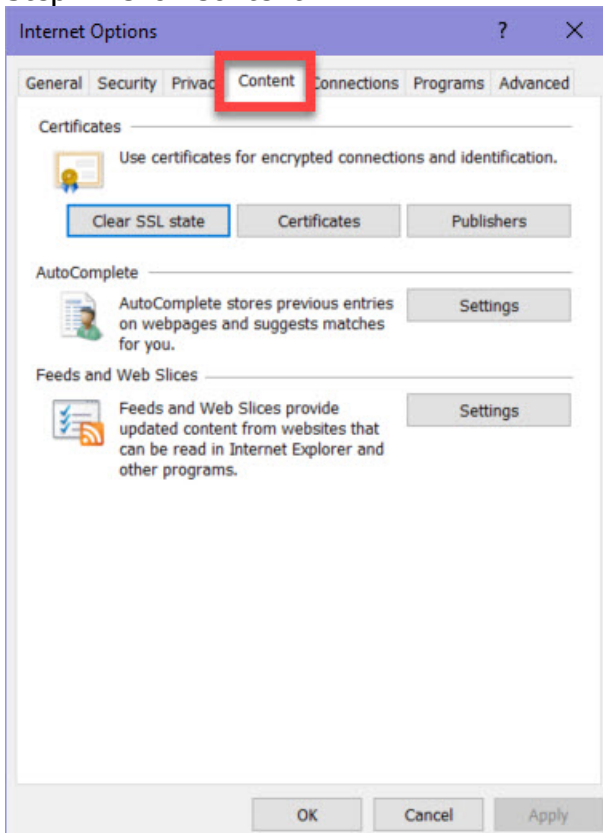
Step 11: A success window will pop-up, click the OK button to finish.



Step 1: Open an IE browser, go to internet options.

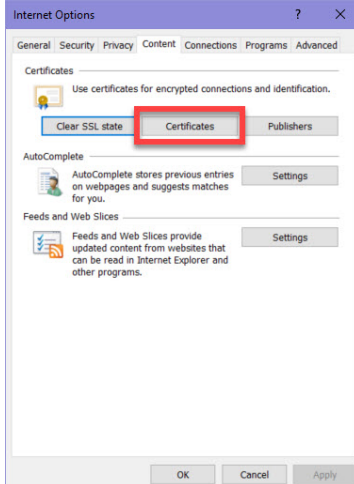


Step 2: Click Content.

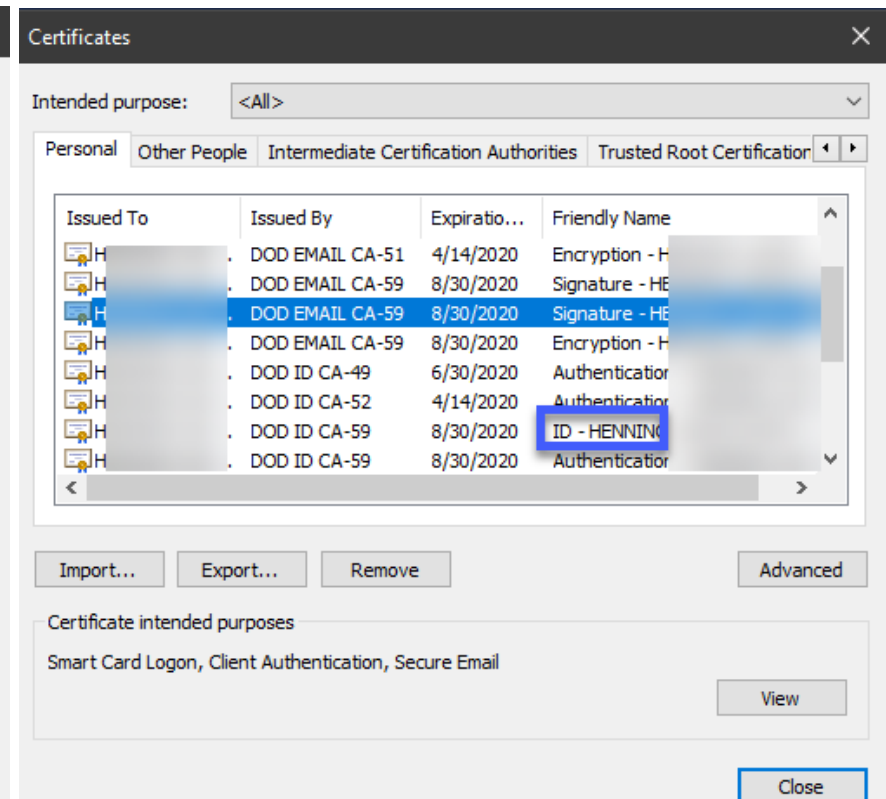
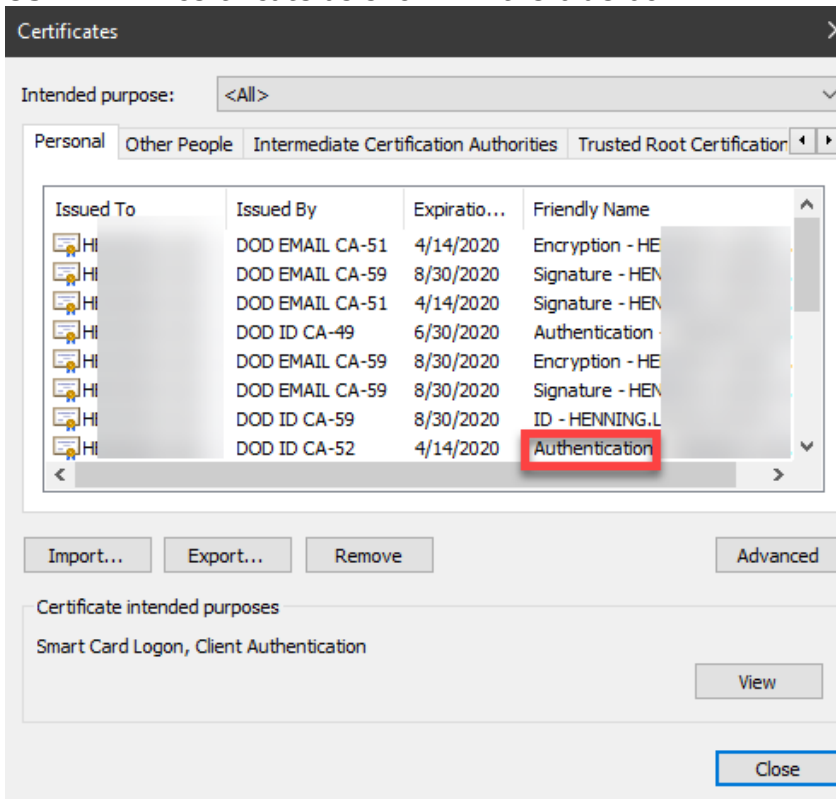


Internet Explorer

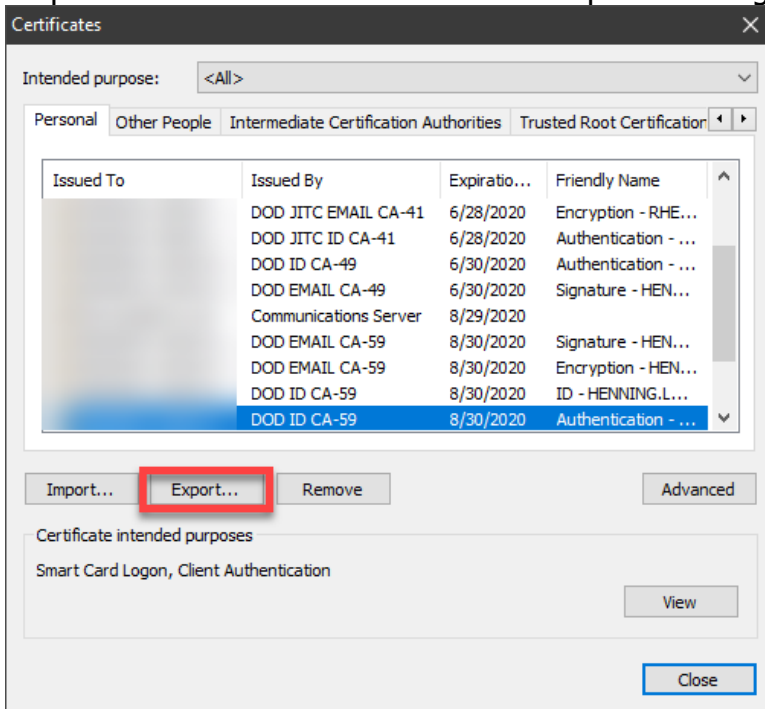
Step 3: Click Certificates.



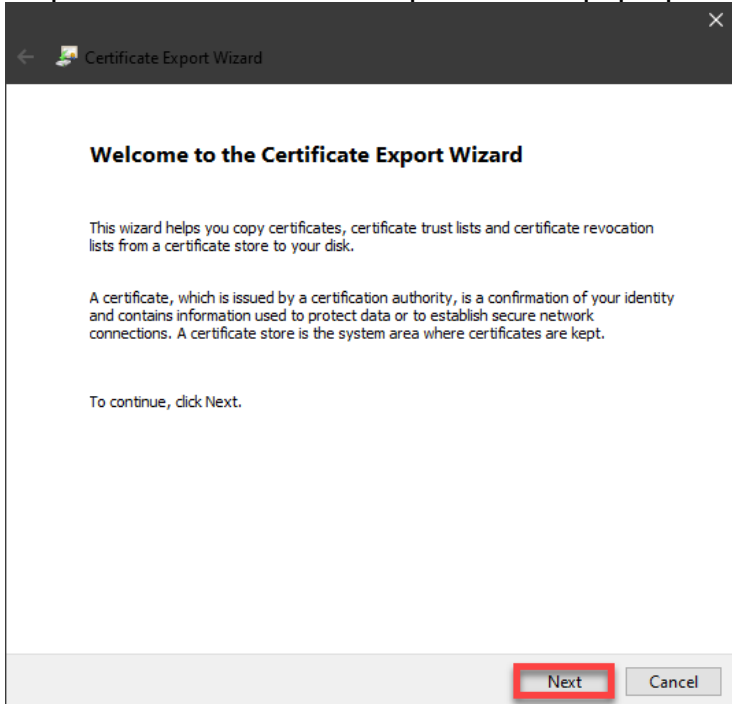
Step 4: In the Certificates pop-up menu, verify the Friendly Name of the Certificate is Authentication – USERNAME, as seen in the red box below. If the Authentication certificate is not present on the Smart Card then the user must use the ID – USERNAME certificate as shown in the blue box.



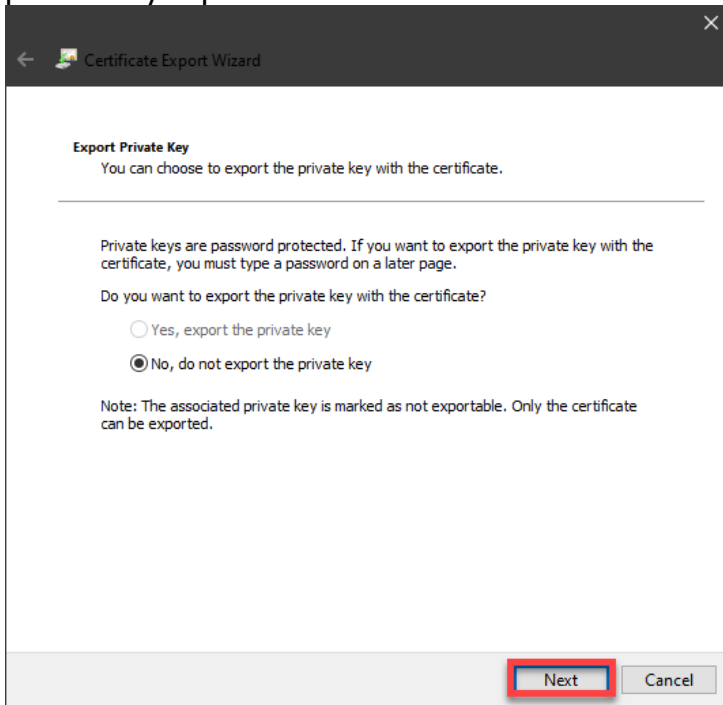
Step 5: Click the certificate that needs exported to highlight and then click the Export button.



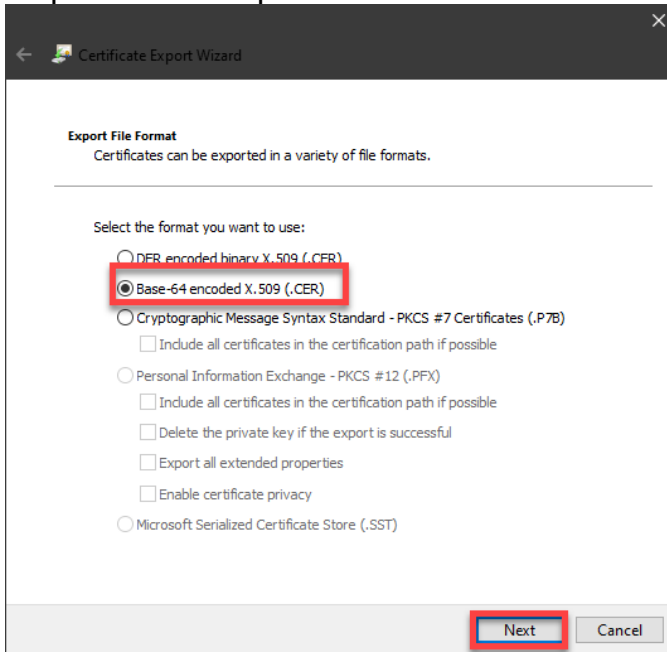
Step 6: On the Certificate Export Wizard pop-up click the Next button.



Step 7: Click the Next button again on the following Export Private Key screen. NOTE: Ensure that the “No, do not export the private key” option is selected.



Step 8: On the Export File Format screen select the “Base-64 encoded X.509 (.CER)” radial option and click the Next button.



Step 9: On the File Export screen click the Browse button, Windows File Explorer will open. Choose a file name and a location on the local machine.

Certificate Export Wizard

File to Export
Specify the name of the file you want to export

File name: Browse...

Next Cancel

Step 10: After naming the file click the Next button.

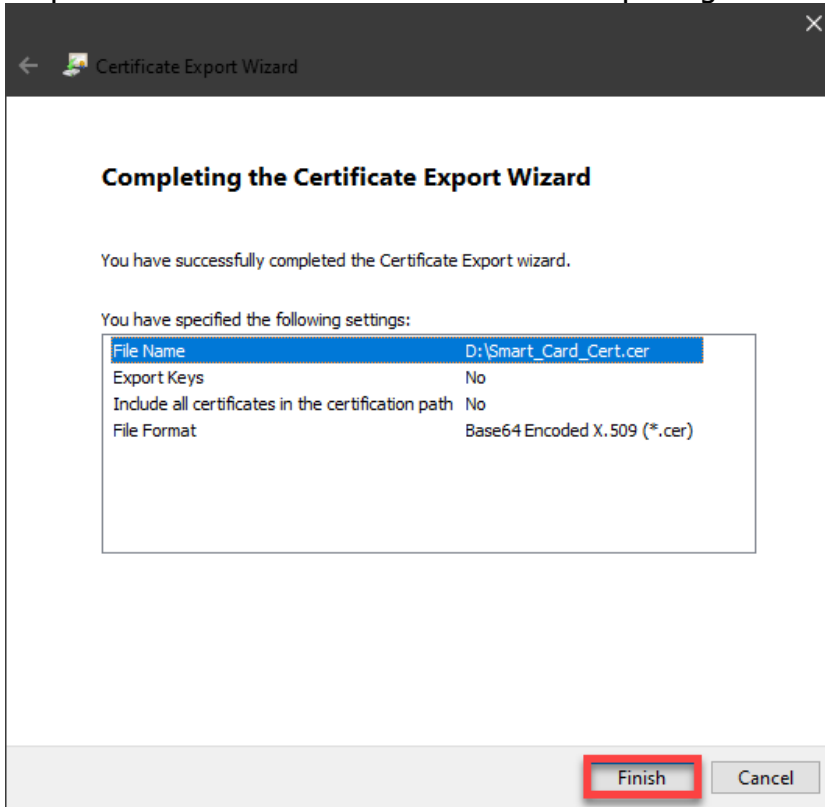
Certificate Export Wizard

File to Export
Specify the name of the file you want to export

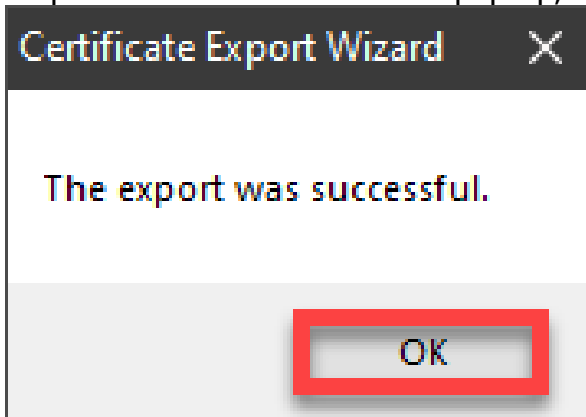
File name: Browse...

Next Cancel

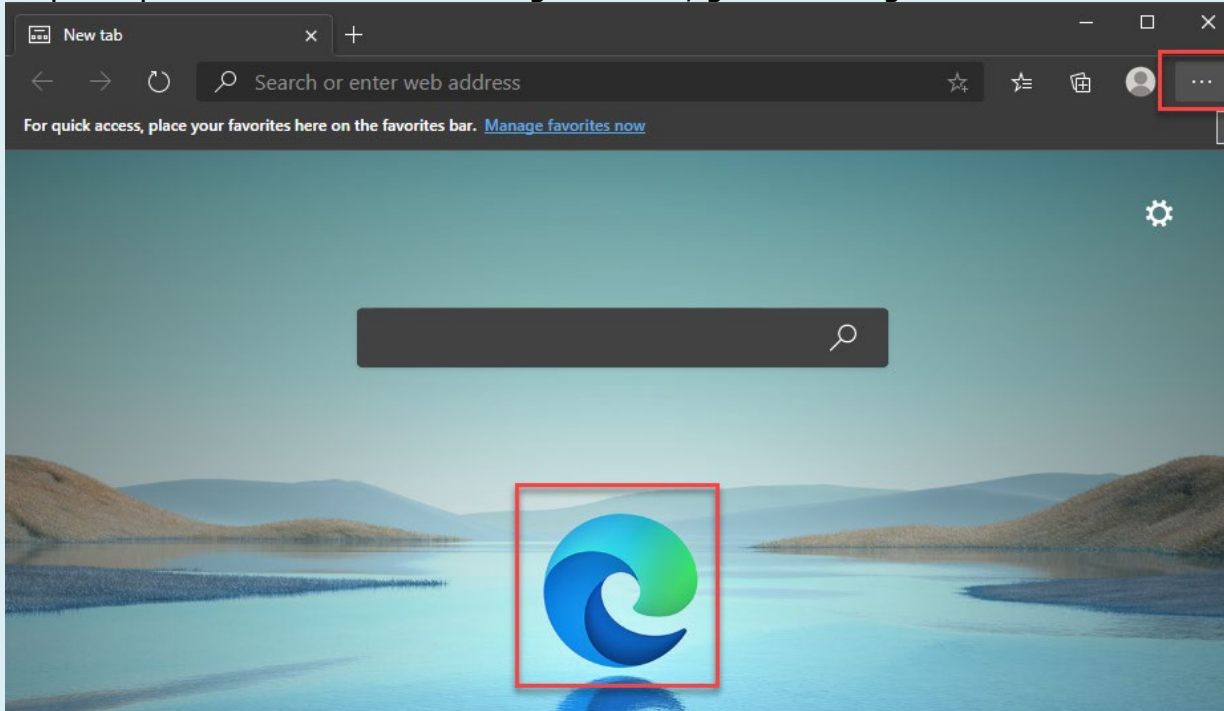
Step 11: Click the Finish button on the Completing the Certificate Export Wizard screen.



Step 12: A success window will pop-up, click the OK button to finish.

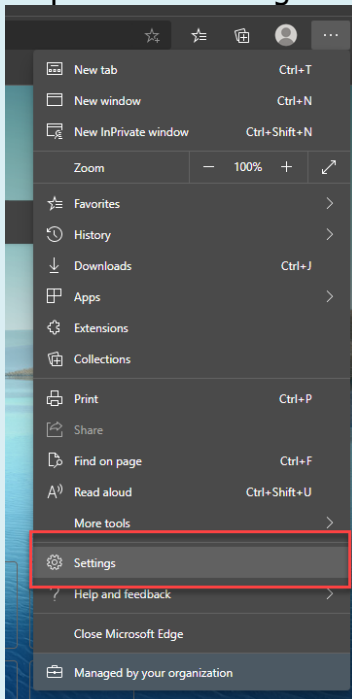


Step 1: Open the "New" Microsoft Edge browser, go to "Settings and more..." three dots in upper right corner.

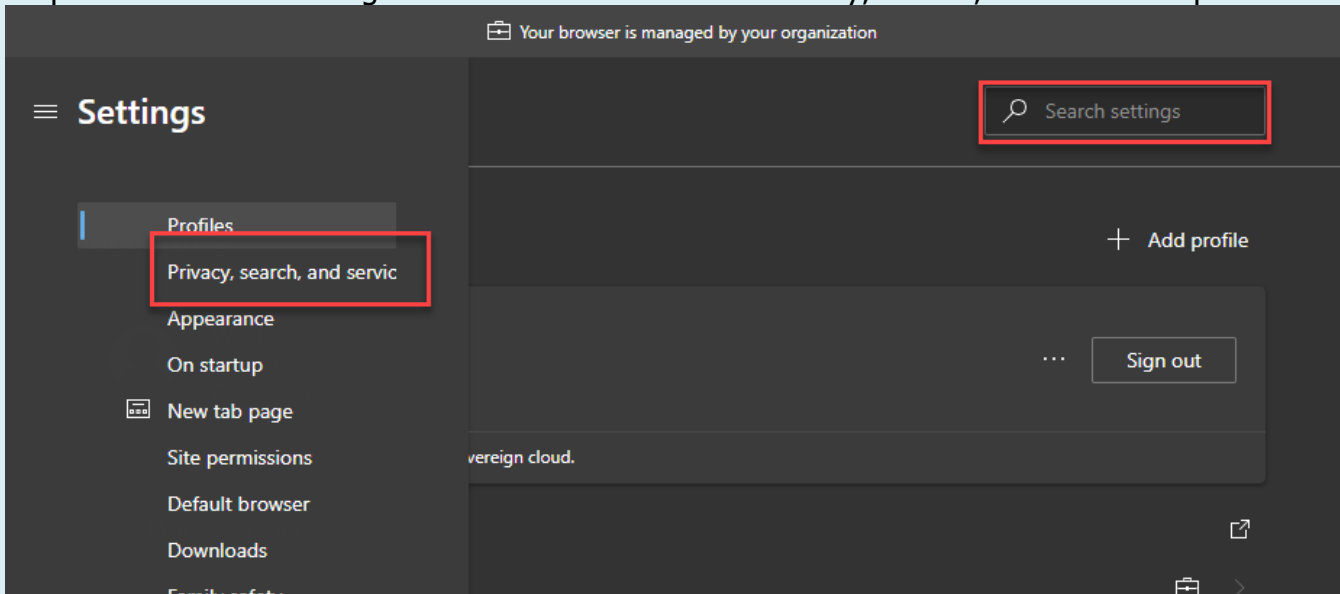


**"New"
Microsoft
Edge**

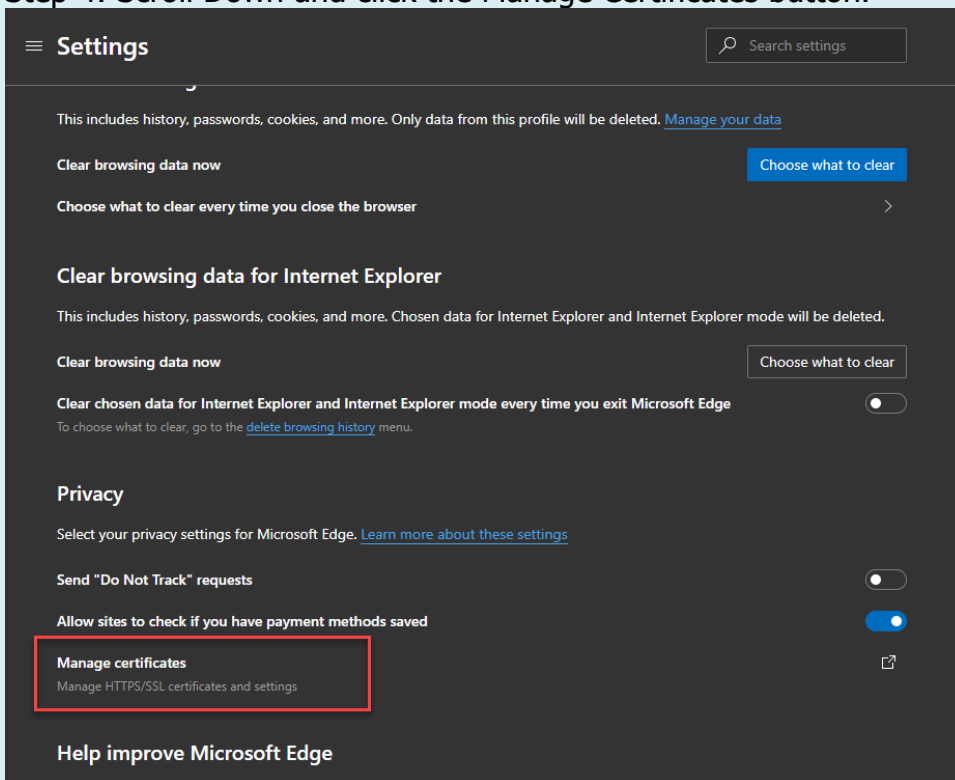
Step 2: Click Settings.



Step 3: Search for "Manage Certificates" or click the "Privacy, search, and service" option.



Step 4: Scroll Down and click the Manage Certificates button.



Step 4: In the Certificates pop-up menu, verify the Friendly Name of the Certificate is Authentication – USERNAME, as seen in the red box below. If the Authentication certificate is not present on the Smart Card then the user must use the ID – USERNAME certificate as shown in the blue box.

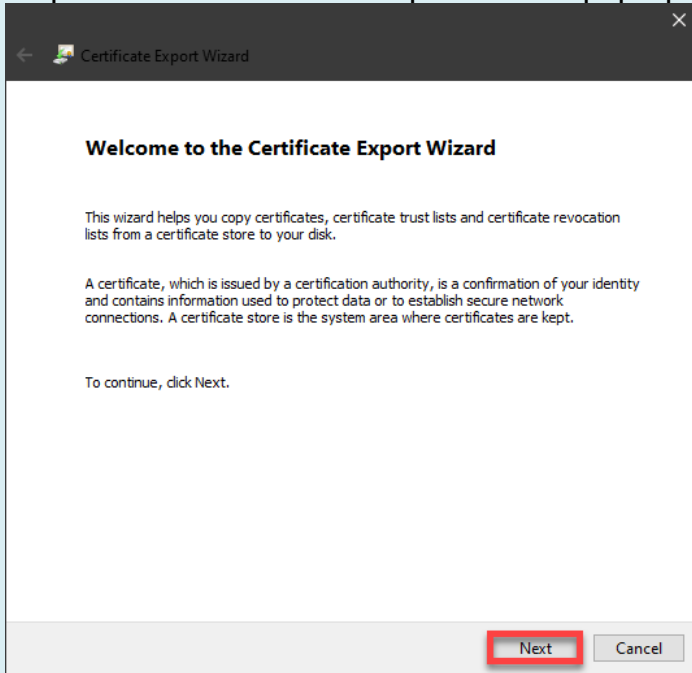
Issued To	Issued By	Expiration Date	Friendly Name
...	DOD EMAIL CA-51	4/14/2020	Encryption - HE
...	DOD EMAIL CA-59	8/30/2020	Signature - HEN
...	DOD EMAIL CA-51	4/14/2020	Signature - HEN
...	DOD ID CA-49	6/30/2020	Authentication -
...	DOD EMAIL CA-59	8/30/2020	Encryption - HE
...	DOD EMAIL CA-59	8/30/2020	Signature - HEN
...	DOD ID CA-59	8/30/2020	ID - HENNING.L
...	DOD ID CA-52	4/14/2020	Authentication

Issued To	Issued By	Expiration Date	Friendly Name
...	DOD EMAIL CA-51	4/14/2020	Encryption - H
...	DOD EMAIL CA-59	8/30/2020	Signature - HE
...	DOD EMAIL CA-59	8/30/2020	Signature - HE
...	DOD EMAIL CA-59	8/30/2020	Encryption - H
...	DOD ID CA-49	6/30/2020	Authentication
...	DOD ID CA-52	4/14/2020	Authentication
...	DOD ID CA-59	8/30/2020	ID - HENNING
...	DOD ID CA-59	8/30/2020	Authentication

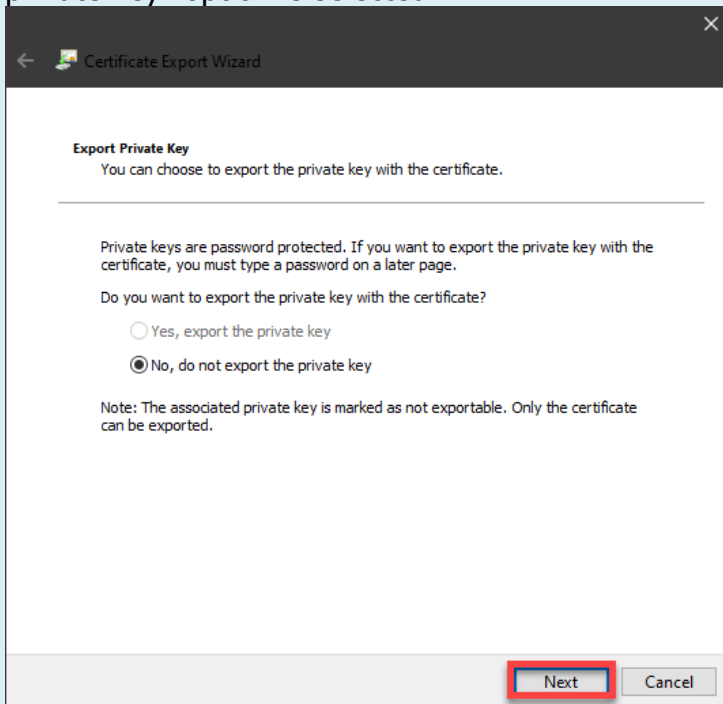
Step 5: Click the certificate that needs exported to highlight and then click the Export button.

Issued To	Issued By	Expiration Date	Friendly Name
...	DOD JITC EMAIL CA-41	6/28/2020	Encryption - RHE...
...	DOD JITC ID CA-41	6/28/2020	Authentication - ...
...	DOD ID CA-49	6/30/2020	Authentication - ...
...	DOD EMAIL CA-49	6/30/2020	Signature - HEN...
...	Communications Server	8/29/2020	
...	DOD EMAIL CA-59	8/30/2020	Signature - HEN...
...	DOD EMAIL CA-59	8/30/2020	Encryption - HEN...
...	DOD ID CA-59	8/30/2020	ID - HENNING.L...
...	DOD ID CA-59	8/30/2020	Authentication - ...

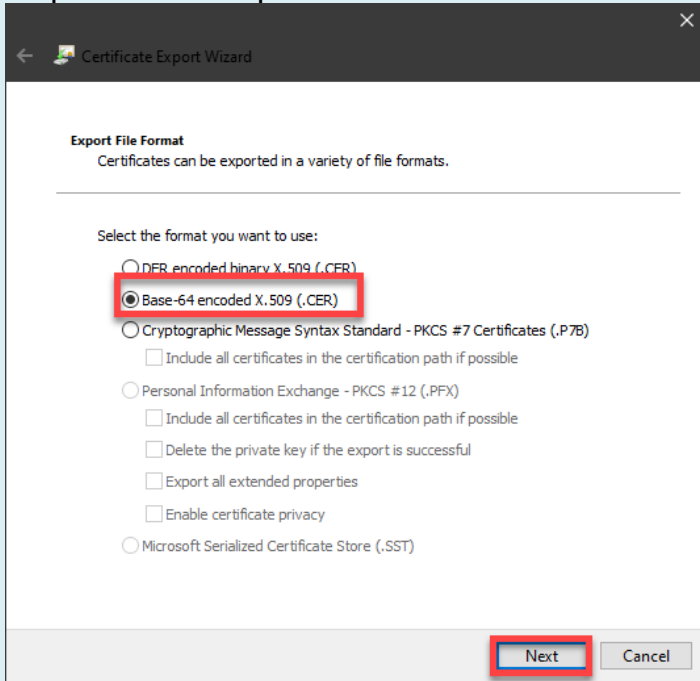
Step 6: On the Certificate Export Wizard pop-up click the Next button.



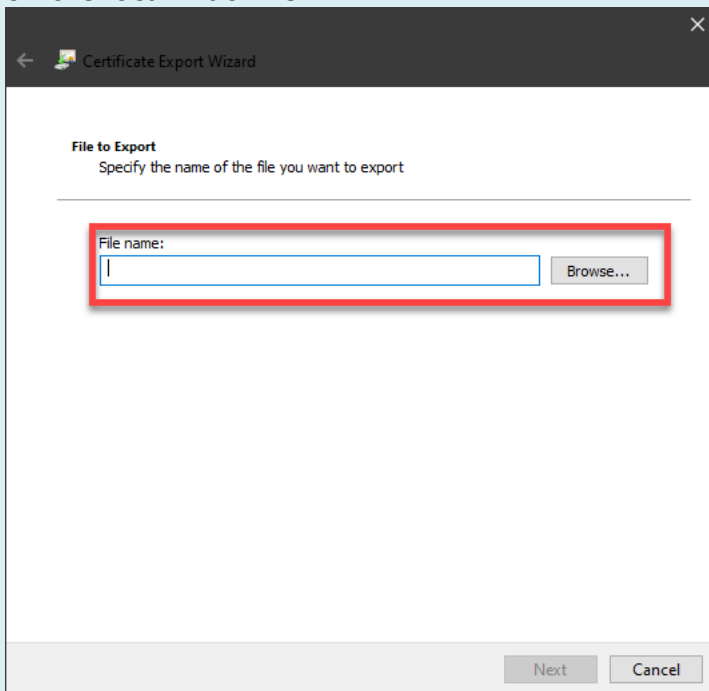
Step 7: Click the Next button again on the following Export Private Key screen. NOTE: Ensure that the "No, do not export the private key" option is selected.



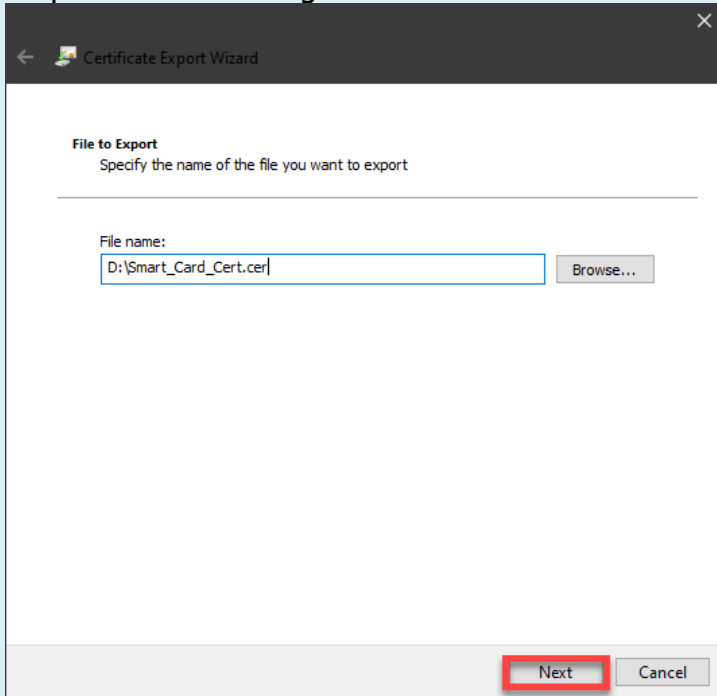
Step 8: On the Export File Format screen select the "Base-64 encoded X.509 (.CER)" radial option and click the Next button.



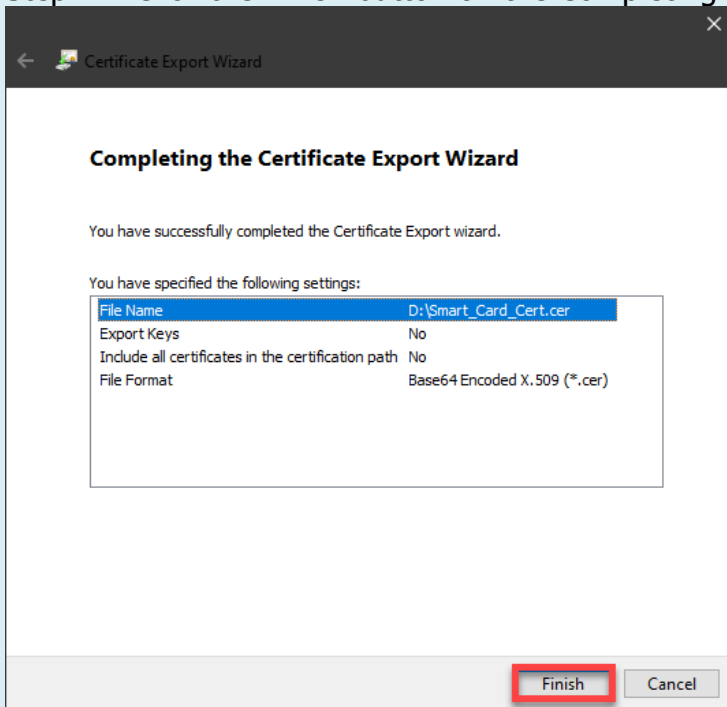
Step 9: On the File Export screen click the Browse button, Windows File Explorer will open. Choose a file name and a location on the local machine.



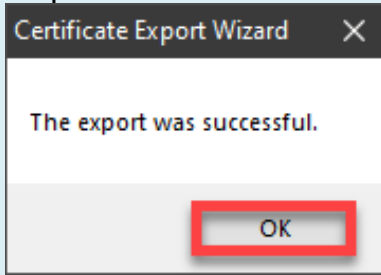
Step 10: After naming the file click the Next button.



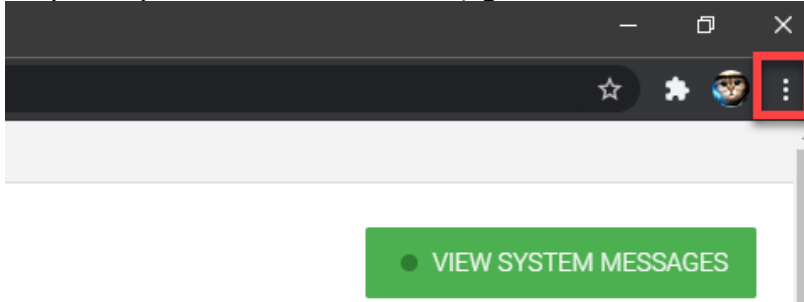
Step 11: Click the Finish button on the Completing the Certificate Export Wizard screen.



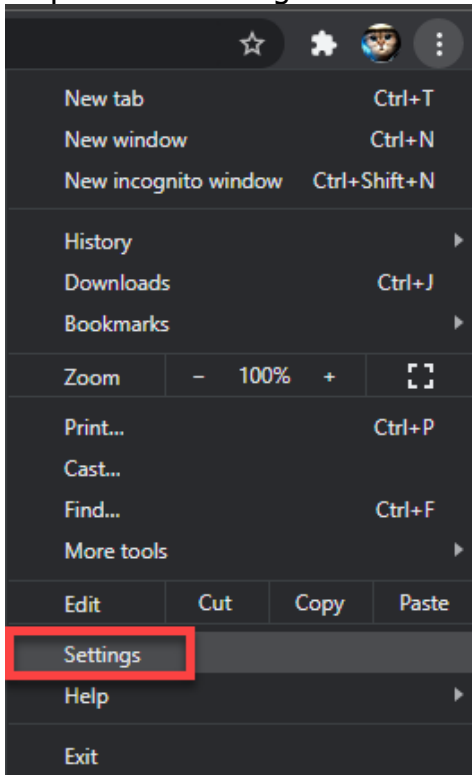
Step 12: A success window will pop-up, click the OK button to finish.



Step 1: Open a Chrome browser, go to Customize and control Google Chrome three dots.

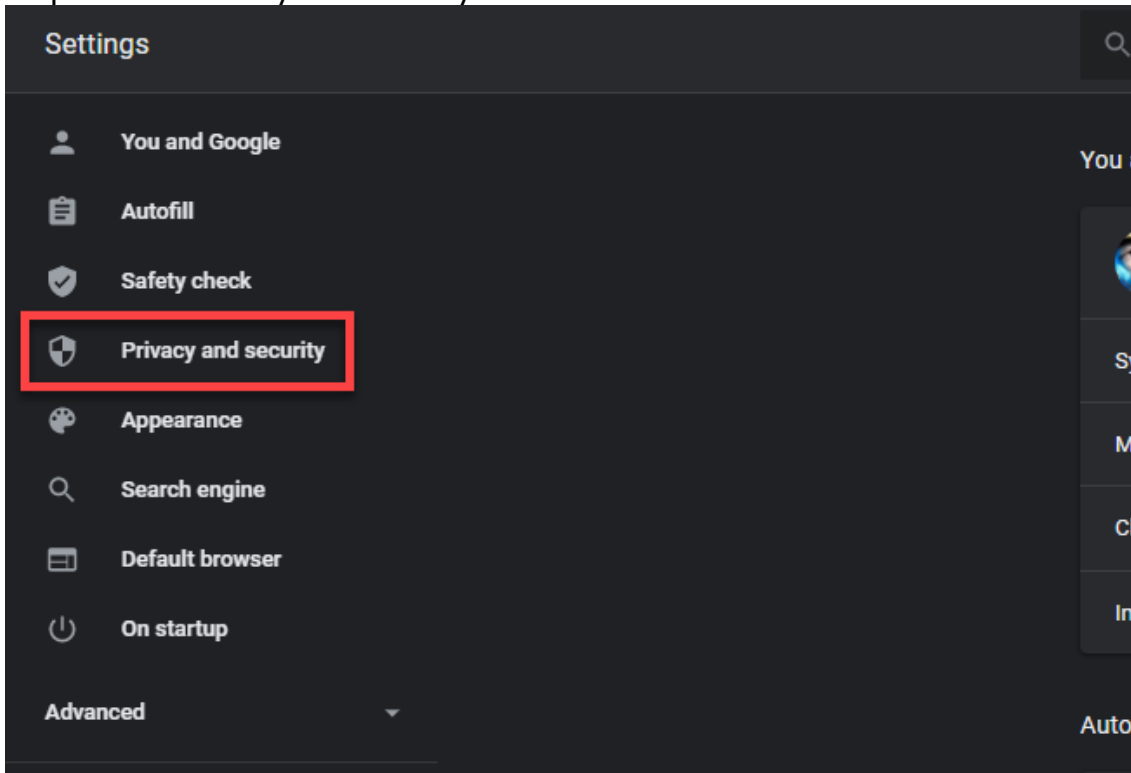


Step 2: Click Settings.

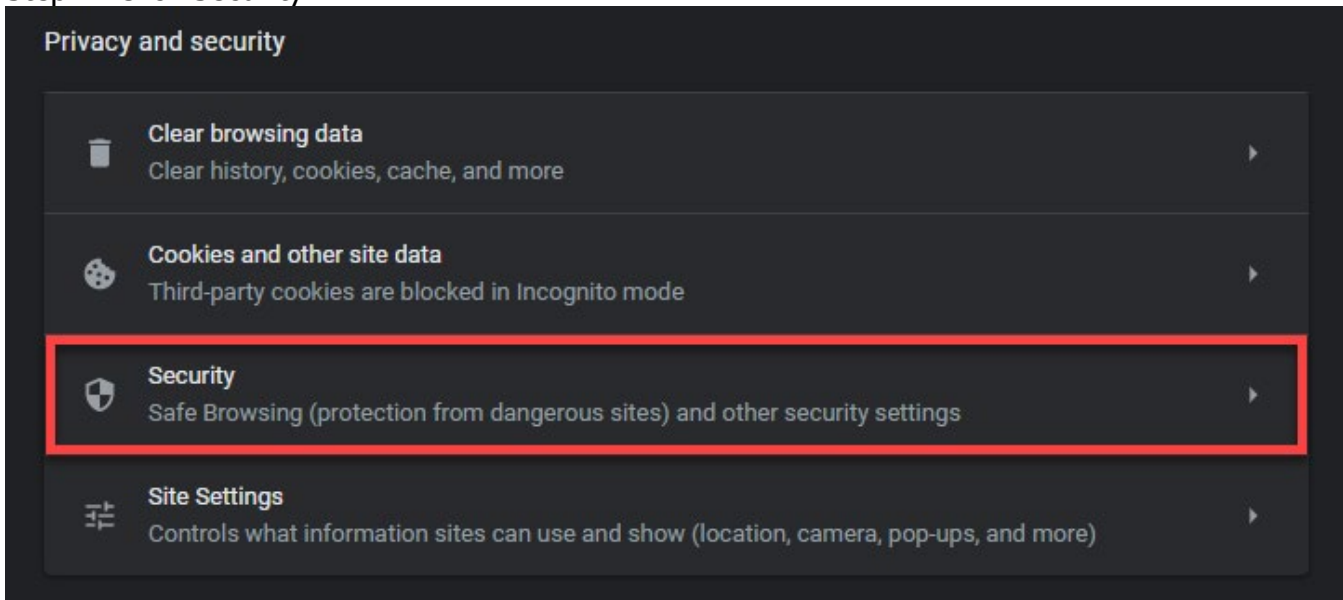


**Google
Chrome**

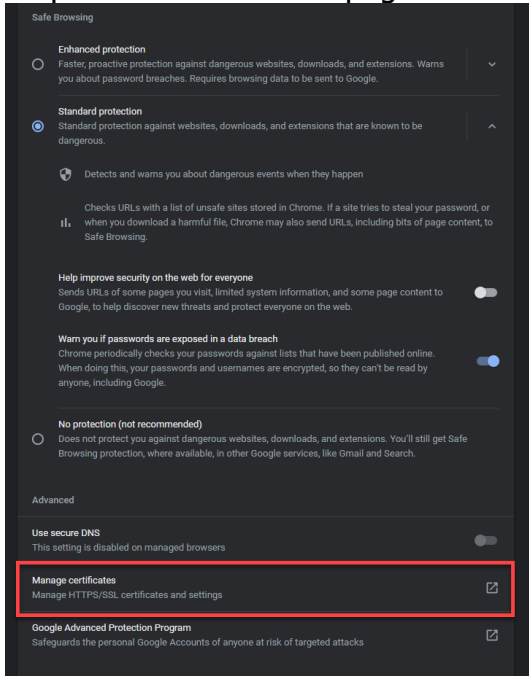
Step 3: Click Privacy and security.



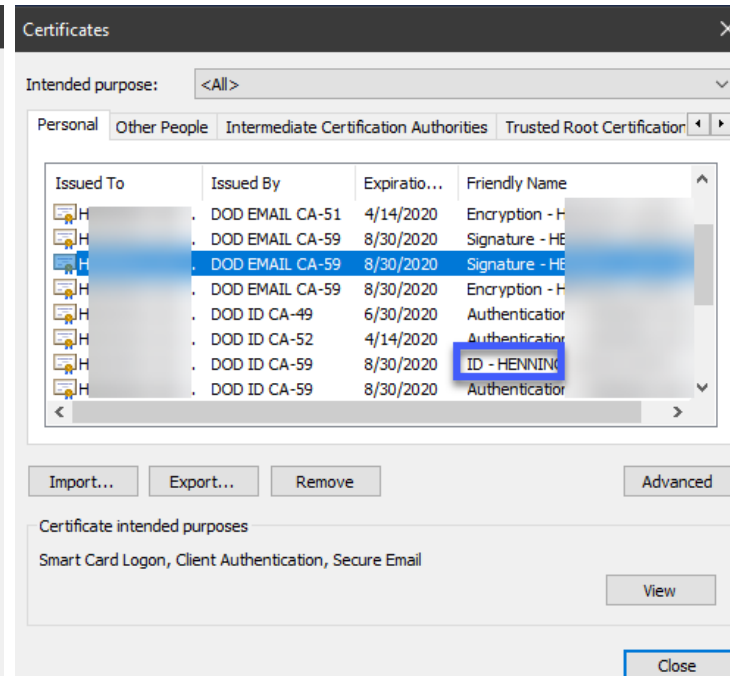
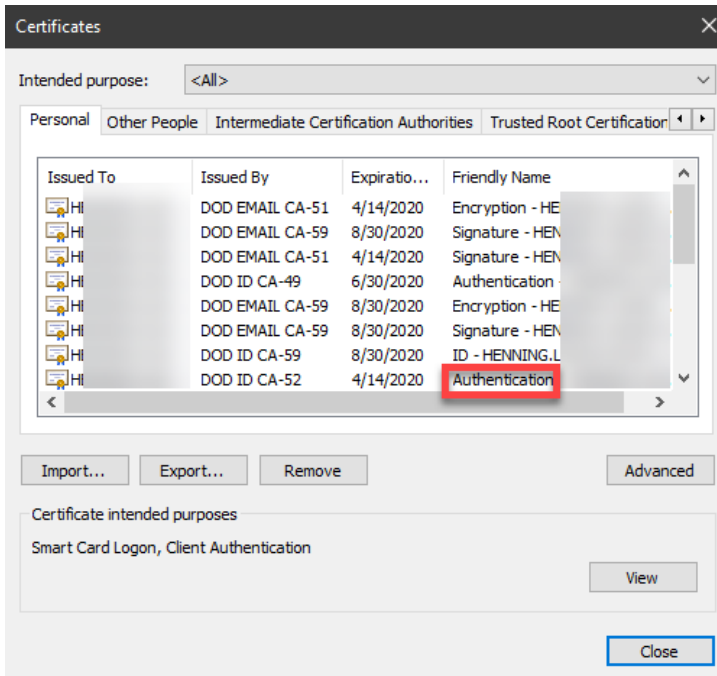
Step 4: Click Security.



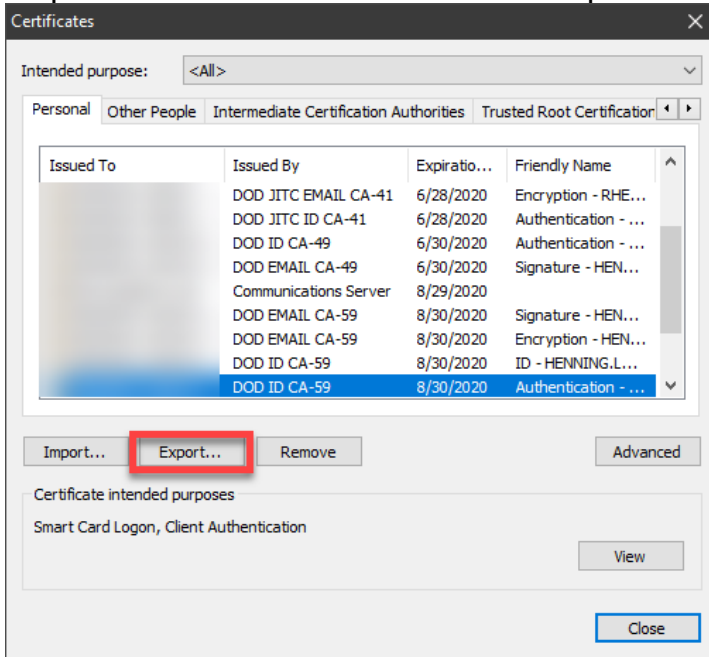
Step 5: Scroll down the page and click Manage certificates.



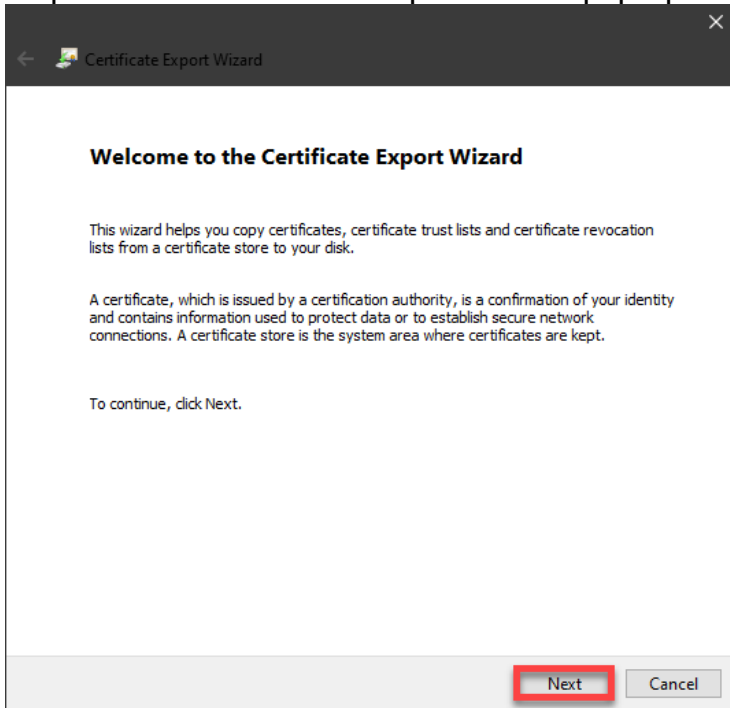
Step 6: In the Certificates pop-up menu, verify the Friendly Name of the Certificate is Authentication – USERNAME, as seen in the red box below. If the Authentication certificate is not present on the Smart Card then the user must use the ID – USERNAME certificate as shown in the blue box.



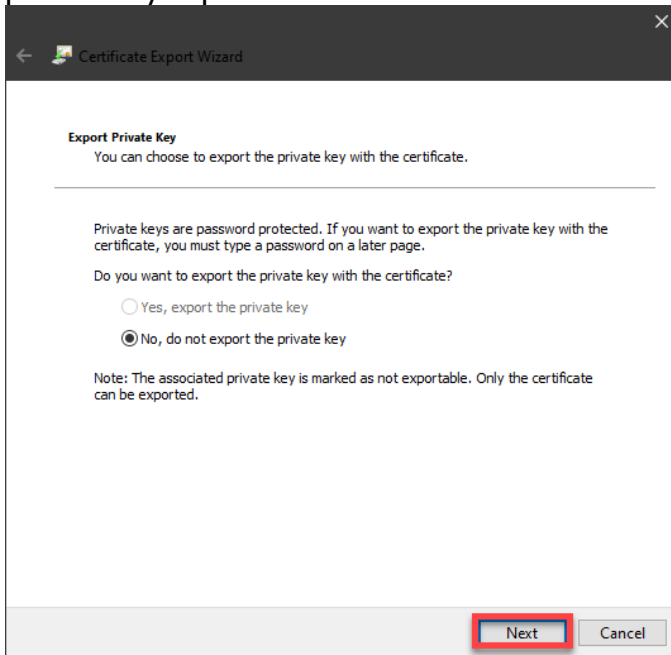
Step 7: Click the certificate that needs exported to highlight it and then click the Export button.



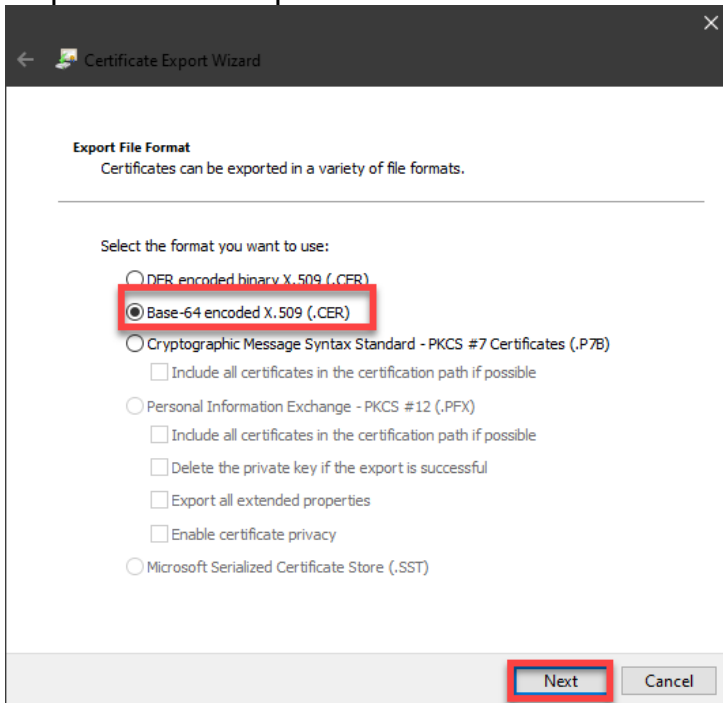
Step 8: On the Certificate Export Wizard pop-up click the Next button.



Step 9: Click the Next button again on the following Export Private Key screen. NOTE: Ensure that the “No, do not export the private key” option is selected.



Step 10: On the Export File Format screen select the “Base-64 encoded X.509 (.CER)” radial option and click the Next button.



Step 11: On the File Export screen click the Browse button, Windows File Explorer will open. Choose a file name and a location on the local machine.

Certificate Export Wizard

File to Export
Specify the name of the file you want to export

File name:

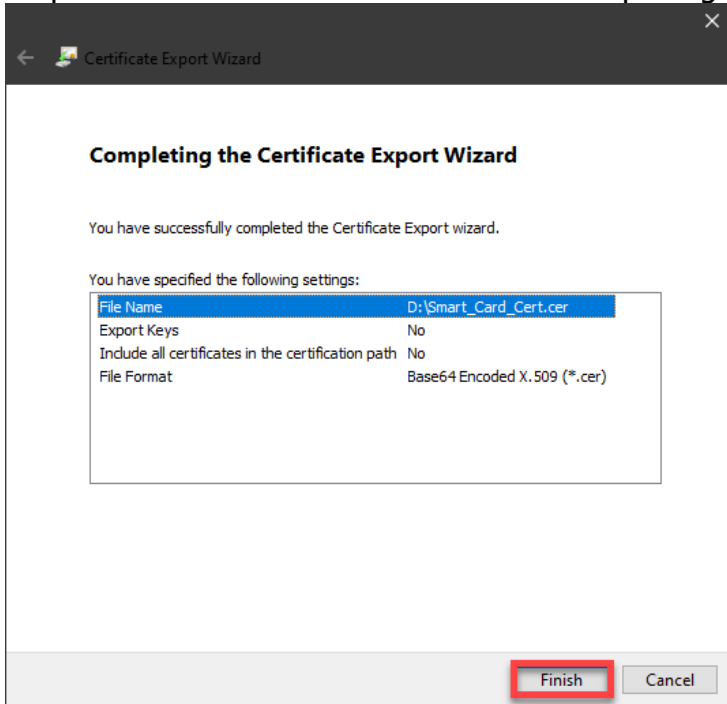
Step 12: After naming the file click the Next button.

Certificate Export Wizard

File to Export
Specify the name of the file you want to export

File name:

Step 13: Click the Finish button on the Completing the Certificate Export Wizard screen.



Step 14: A success window will pop-up, click the OK button to finish.

